

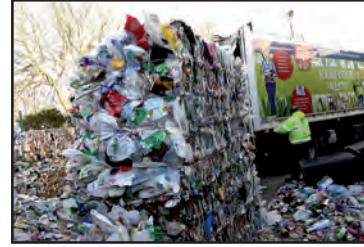
Do you recycle?



Find out the latest on recycling at www.douglas.gov.im



Search for 'Douglas Borough Council'



Discarded plastic bottles are an all too common sight on beaches and roadsides, but did you know they can be easily recycled at any of the island's civic amenity sites?

'By weight plastics only make up about five per cent of household waste and yet they're the biggest contributor to overflowing bins and the litter problems it creates,' explained Douglas Borough Councillor Ritchie McNicholl. 'We're trying to extract as much plastic as we can from the waste stream as it makes so much sense to recycle it: it's better for the environment, it saves bin space and plastic is a valuable resource which we can sell.'

Around 75 tonnes of the Isle of Man's discarded plastic bottles are now recycled every year by Douglas Borough Council, who act as contracted collectors for recyclable material for the island's civic amenity sites and kerbside collection schemes in Douglas, Braddan and Port St Mary.

Plastic bottles are the most recent addition to the recycling options available to householders at the civic amenity sites, having been introduced in 2012. 'They're by far the biggest contributor to plastic waste in household refuse and the main reason why bins overflow,' Councillor Ritchie McNicholl continued. 'Unless they're deliberately squashed they don't compact at all and it's very easy for them to be blown away.'

'We can take any type of plastic bottle as long as they are empty at the civic amenity sites or through the kerbside collection schemes, from fizzy drinks bottles and milk bottles to household cleaners.'

'It's an easy change to make and can make a big difference to families that find themselves struggling with a full wheelie bin before collection day,' he added.

The size and weight of bottles means it's easier for Douglas Borough Council to collect them from the civic amenity sites using a bin lorry which compacts the plastic. Using the bin lorries can lead to some misconceptions, according to Councillor Ritchie McNicholl. 'We do get some funny looks when we pick up recyclables with a bin lorry,' he said. 'But we can get over three tonnes of plastic bottles into a bin lorry and only a fraction of that into one of our top-loading lorries, and we avoid the problem of bottles being blown away as they're loaded.'

It's estimated that 40 per cent of the island's household waste could be recycled, and the raw materials are in demand. The Council's recycling processing centre, based at the Isle of Man Business Park in Braddan, is the hub of municipal recycling in the island. Every month it receives around 120 tonnes of recyclable material including paper, card, cans and plastics from the island's civic amenity sites, bring banks and kerbside collection schemes for sorting and processing before being sold in the UK.

Plastic bottles are dropped at the recycling centre where they are pierced and compacted into bales by specialist machinery before being sold to recycling facilities in the UK. The equivalent of a full trailer load, weighing nearly 20 tonnes, is shipped away every three months to be made into recycled plastic goods known as secondary plastics.

An amazing number of cheap household items, like washing up bowls or broom handles, are made from recycled plastics, which is why they are so cheap for consumers. 'If they were made of primary plastics you'd easily triple the price but there's no real difference in quality between them,' Councillor Ritchie McNicholl said. 'It makes essential items affordable for people. That's true of recycling in general, and plastics in particular.'

More than 300 million tonnes of plastic was produced from crude oil in 2014 and the annual figure is expected to double over the next 20 years. With a new report by the Ellen MacArthur Foundation suggesting that there will be more waste plastic than fish in the world's oceans by 2050, it can be hard to imagine it as a finite resource.

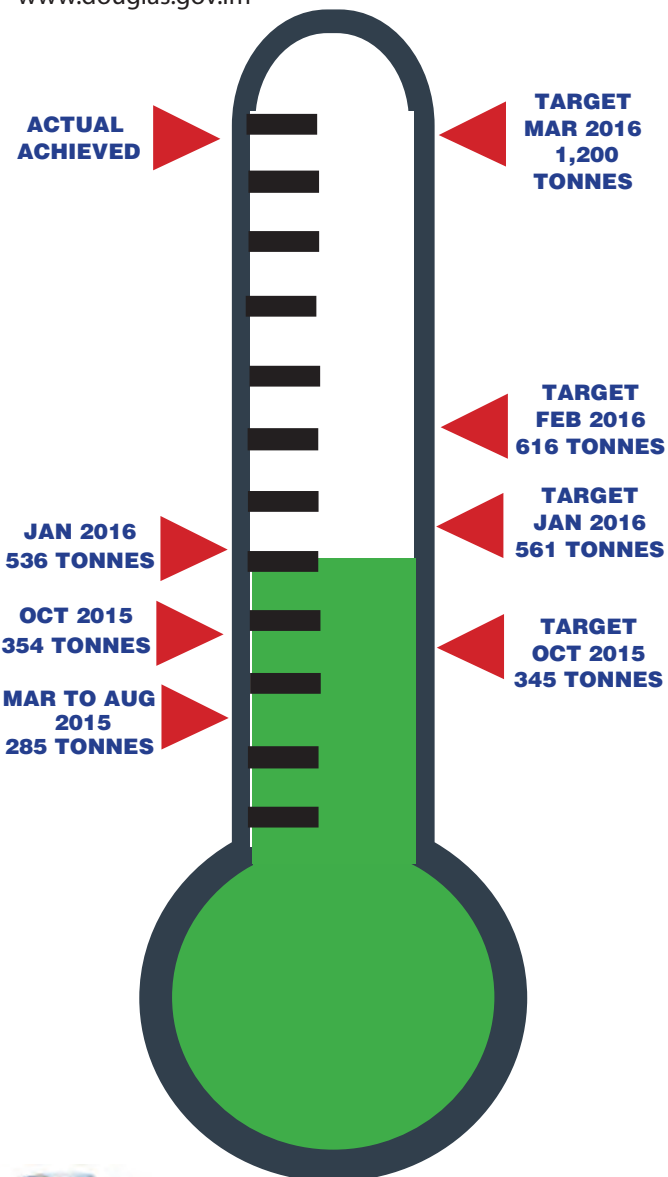
'There's only a limited supply of oil out there so it makes sense to use as much secondary plastic as we possibly can,' explained Councillor Ritchie McNicholl. 'Plastic is a finite resource that can be used over and over again, so the idea of single use plastics can seem outdated, even irresponsible in the 21st Century.'

Douglas Borough Council's Waste Services Team can also arrange collections for companies that regularly dispose of plastic bottles, while residents of Douglas and Braddan can sign up to the kerbside collection schemes for free. Kerbside recycling boxes can be ordered by residents in the Douglas and Braddan area by contacting the Waste Services Team.

The 2016 Kerbside Recycling Calendar has been delivered to all current kerbside subscribers, should you not have received your new Calendar check online at www.douglas.gov.im or contact the Waste Services Team.

Hourly tours of the processing centre will take place on Saturday, 5th March 2016 between 10am and 3pm. Advance booking is essential, email jedwards@douglas.gov.im to book a place. Accompanied children are welcome but must be aged six or over due to the machinery in operation.

For more information contact Douglas Borough Councils Waste Services Team on 696445 or check www.douglas.gov.im



reuse



reduce



recycle